



MONTHLY MEMBERSHIP PROGRESS REPORT

Results as of: 3/31/2015

Multiple District 19

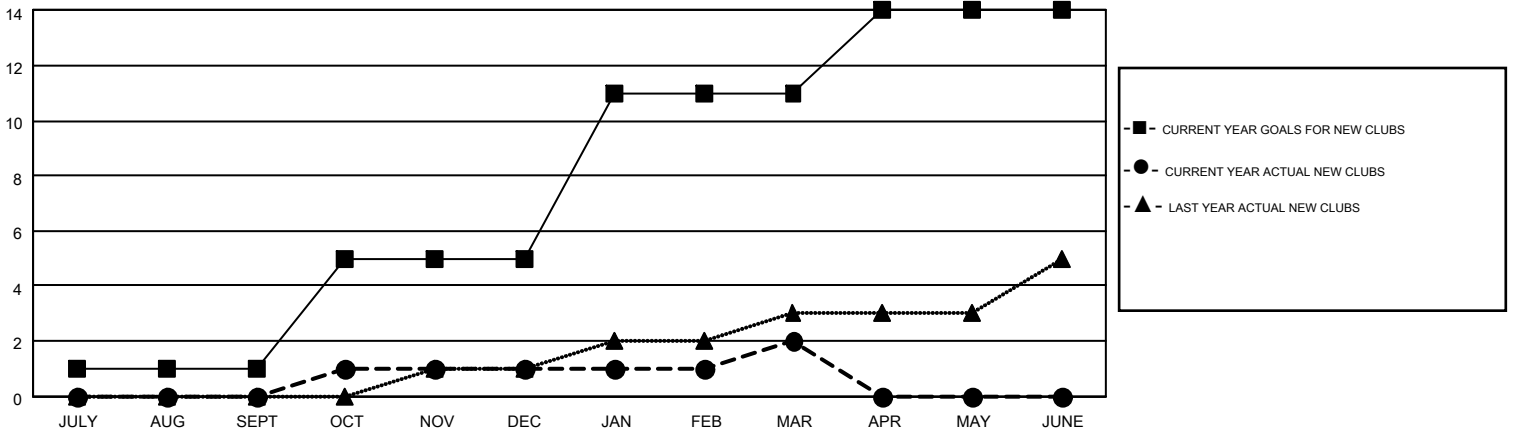
LOCATION: WASHINGTON

GMT: DENNIS STEVENSON, GARY WONG

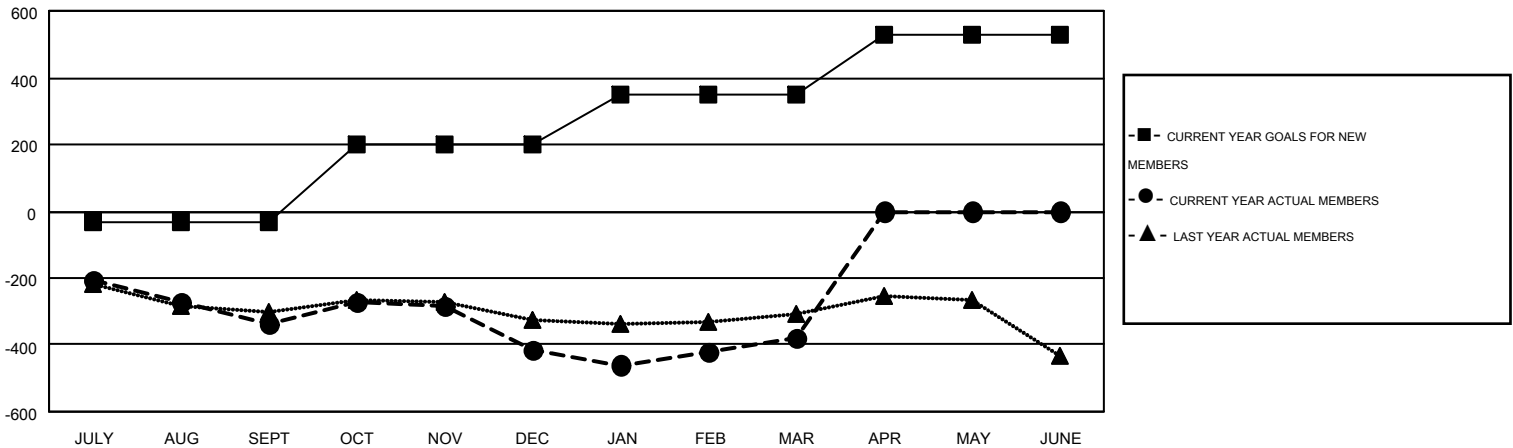
GMT CA NA

| Clubs | | | | | Members | | | | |
|-----------------------|---------------|-----------|---------------|---------------|-----------------------|-----------------|-------------------------------|-----------------|---------------|
| RESULTS FOR 2014-2015 | | | | | RESULTS FOR 2014-2015 | | | | |
| QUARTER | NEW CLUB GOAL | NEW CLUBS | DROPPED CLUBS | NET GAIN/LOSS | QUARTER | NEW MEMBER GOAL | CHARTER AND NEW MEMBERS ADDED | DROPPED MEMBERS | NET GAIN/LOSS |
| JULY/AUG/SEPT | 1 | 0 | 5 | -5 | JULY/AUG/SEPT | -30 | 225 | 561 | -336 |
| OCT/NOV/DEC | 4 | 1 | 3 | -2 | OCT/NOV/DEC | 228 | 361 | 439 | -78 |
| JAN/FEB/MAR | 6 | 1 | 5 | -4 | JAN/FEB/MAR | 152 | 353 | 320 | 33 |
| APR/MAY/JUNE | 3 | 0 | 0 | 0 | APR/MAY/JUNE | 177 | 0 | 0 | 0 |

GOALS AND ACTUAL NEW CLUBS CUMULATIVE



GOALS AND ACTUAL MEMBERS CUMULATIVE



| | | | |
|------------------------|--|---|----------------|
| DROPPED CLUBS: 13 | 291 CLUBS OF 456 ADDED 1 OR MORE NEW MEMBERS | <u>GENDER DISTRIBUTION</u> | |
| | | MALE | 7,923 (65.32%) |
| <u>DROPPED MEMBERS</u> | | FEMALE | 4,207 (34.68%) |
| DECEASED | 148 | CLICK HERE FOR HEALTH ASSESSMENT DATA | |
| CLUB CANCELLED | 27 | | |
| OTHER | 1,144 | | |
| TOTAL | 1,319 | FAMILY UNIT MEMBERS | 2,479 |
| | | HEAD OF HOUSEHOLD | 1,219 |
| | | NON-HEAD OF HOUSEHOLD | 1,260 |